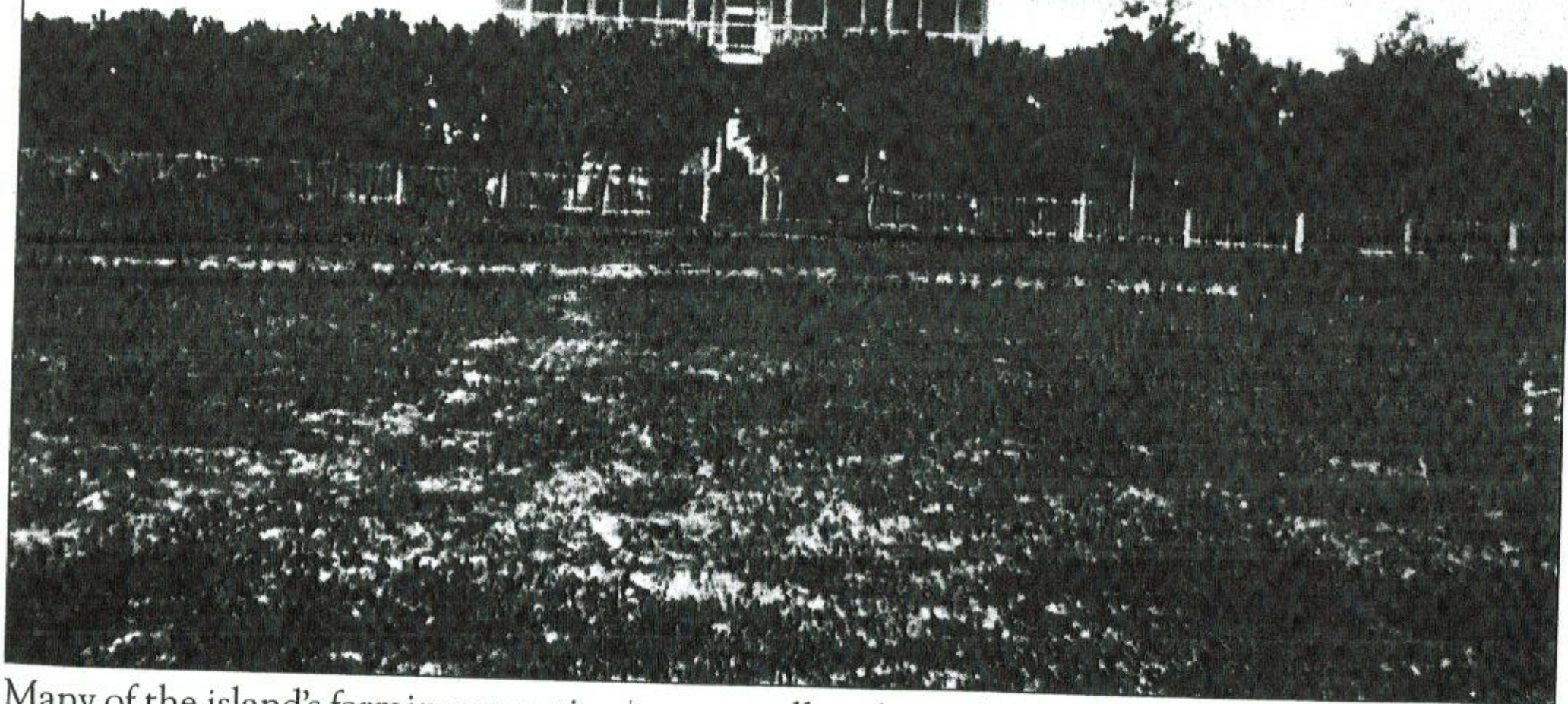


Amelia Island/
Fernandina

Atlantic Elementary
School site



Many of the island's farming operations were small-scale productions. Joseph Finnegan's 40-room home was located on the block bordered on the east and west by Eleventh and Twelfth Streets and on the north and south by Broome and Calhoun Streets. The home was among the island's most impressive and featured a large grove of orange and olive trees that Finnegan enjoyed. (Courtesy Florida State Archives.)